

# PDS

TAKE CONTROL

Creo View

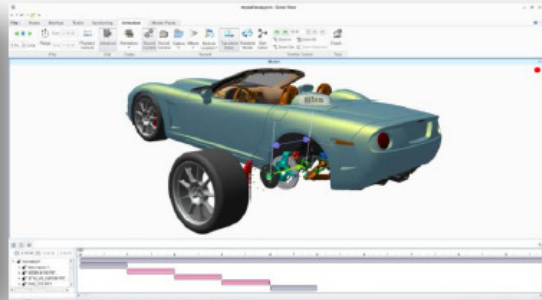
2013-11-21

Lars Björs

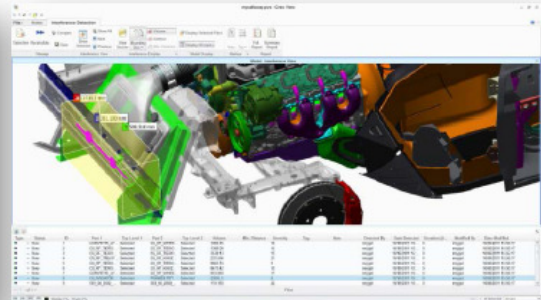
# Helhetsbild



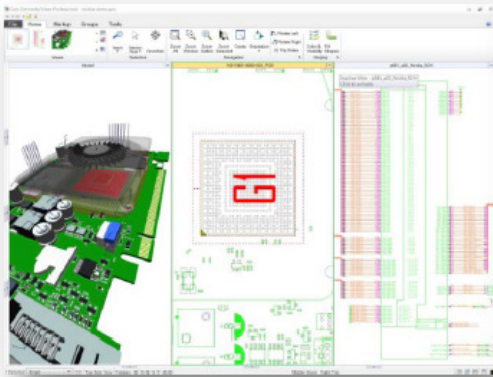
Leverage compact viewable data for Technical Illustrations and downstream delivery



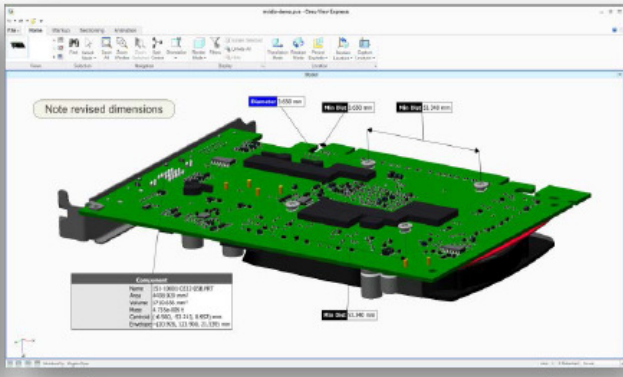
Create high-impact animations



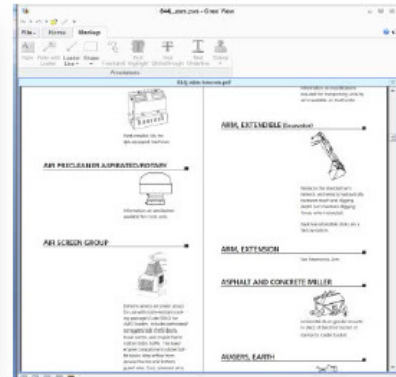
Perform robust interference detection



Streamline communications between MCAD and ECAD



Mark-up and measure all digital product data



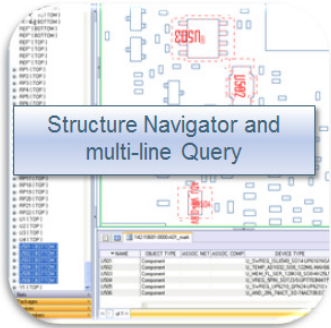
Mark-up, review, print, watermark PDF documents

# Olika varianter

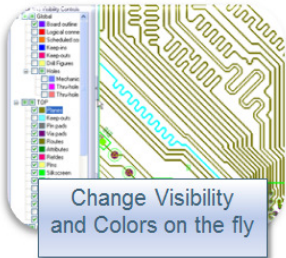
	Creo View Express formerly ProductView® Express	Creo View Lite formerly ProductView Lite	Creo View MCAD formerly ProductView Professional	Creo View ECAD formerly InterComm® Expert™
<b>Usability</b>				
User interface (Microsoft-fluent UI)	•	•	•	•
Load, visualize, analyze large assemblies	•	•	•	•
<b>Supported import file formats</b>				
MCAD <sup>1</sup>	•	•	•	•
ECAD <sup>2</sup>	•	•	•	•
2D formats <sup>3</sup>	•	•	•	•
Documents: PDF	•	•	•	•
Image <sup>4</sup>	•	•	•	•
Illustration: ISO	•	•	•	•
STEP files		•	•	
Other formats: STL, VRML, DGN, GBF, IGES			•	
<b>Toolkits</b>				
Web Toolkit support	•	•	•	•
Office Toolkit support	•	•	•	•
Java Toolkit support		•	•	•

# Visualisera EDA filer

# Creo View ECAD



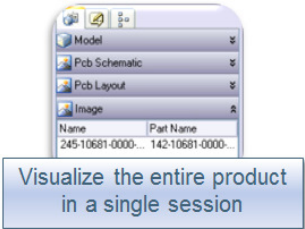
Structure Navigator and multi-line Query



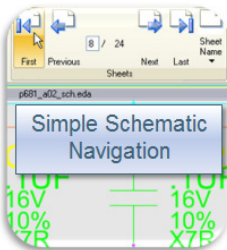
Change Visibility and Colors on the fly



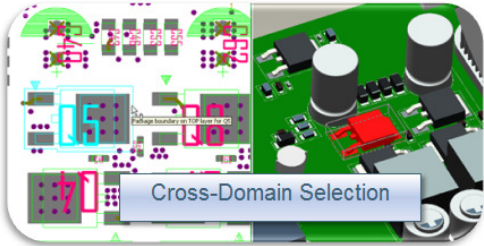
User Defined Highlights



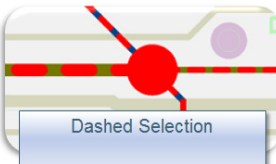
Visualize the entire product in a single session



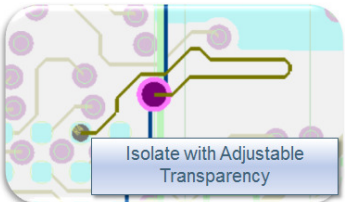
Simple Schematic Navigation



Cross-Domain Selection



Dashed Selection



Isolate with Adjustable Transparency

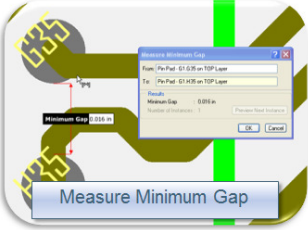
## Creo View Interface for ECAD

### ECAD viewable generation

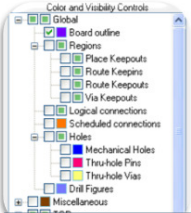
Simplify the viewable creation process for ECAD tool users and spend less time generating viewable and more designing.



- Enables Creo View .eda file generation for use with Creo View ECAD and Creo View ECAD Compare products
- Seamless integration into ECAD tools menu\*
- Enables design partners to create Creo ECAD viewables for collaboration across entire organization
- Support for the following:
  - Mentor Graphics
  - Cadence
  - Altium
  - Zuken
  - \* Where allowed
- Download size: 51.1 MB



Measure Minimum Gap



Regions and Holes Normalized

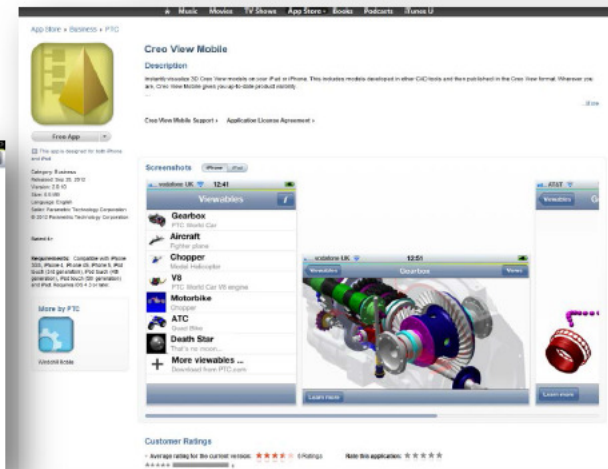
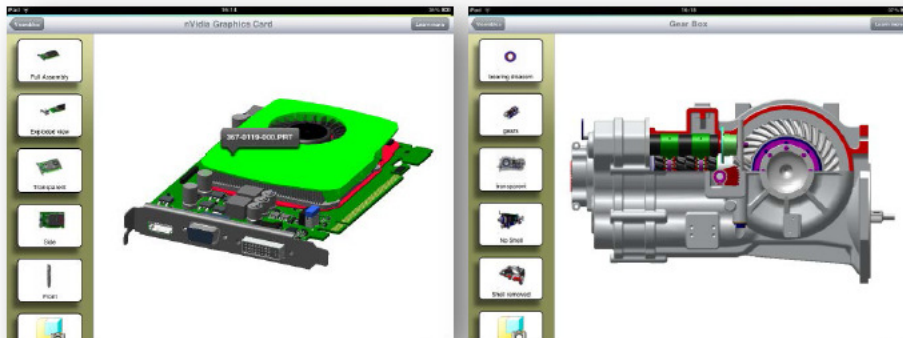
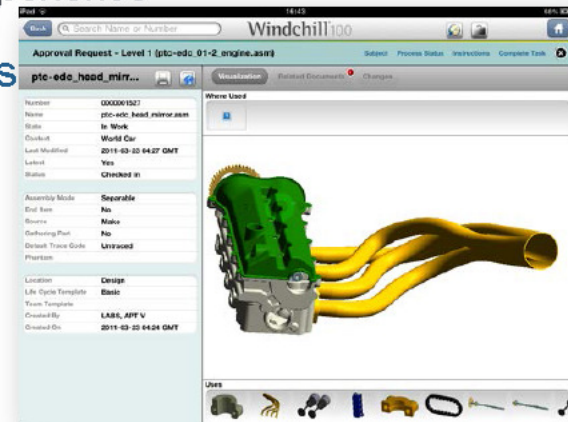


Measure Plane Area

# Creo View Mobile

*Goal : Provide a visual, rich, business-centric mobile experience*

- Visual Componentry for PTC Windchill mobile apps
  - View, interrogate, navigate 3D models
- PTC Creo View mobile app for iPhone® and iPad®
  - View data from email, pre-loaded or from a server
  - Apple-style multi-touch navigation
  - Now available from the App Store !
    - ... and it's free !

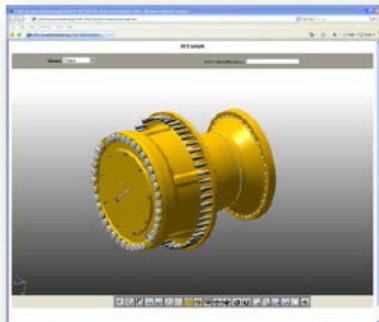


# Support for Windows 7 Multi-Touch Display

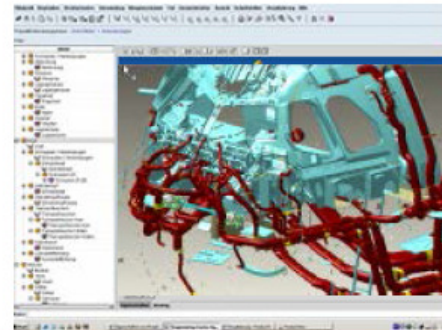


# Toolkits

- Toolkits to enable re-usability



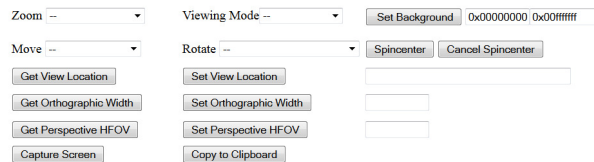
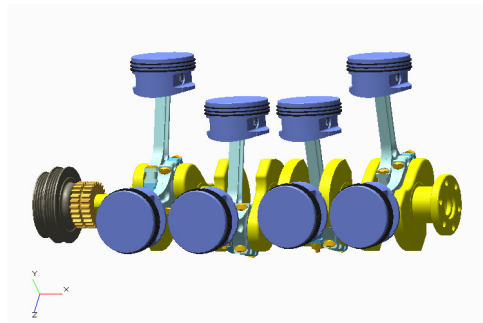
PTC Creo View **Web Toolkit**  
*for embedding in web pages*



PTC Creo View **Java Toolkit**  
*Building custom Java apps*

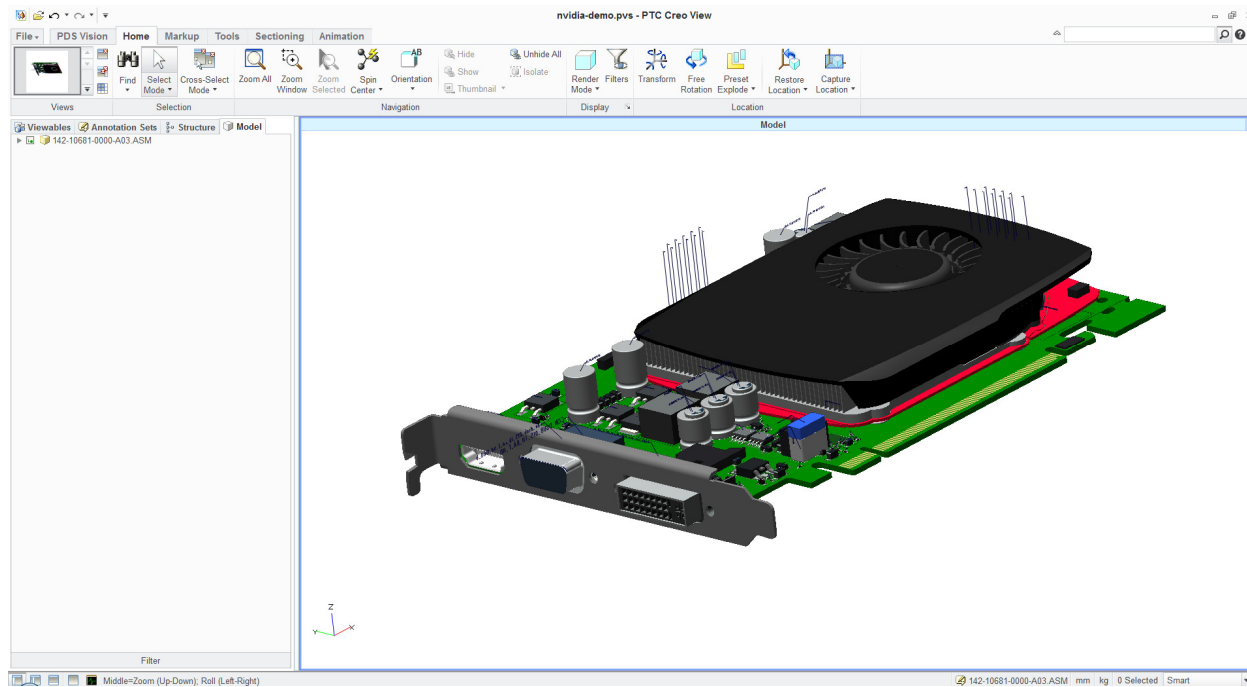


PTC Creo View **Office Toolkit**  
*Embed in Office Documents*



# Nyheter Creo View 3

- Translate + Rotate = Transform
- Command Finder
- Customisera tabbar och Quick Access Toolbar
- Mätverktyg
- Visa flytta Spin Center
- Text på tabbar i modellträd
- Ladda data från disk i WC
- Flat annotations i eget fönster





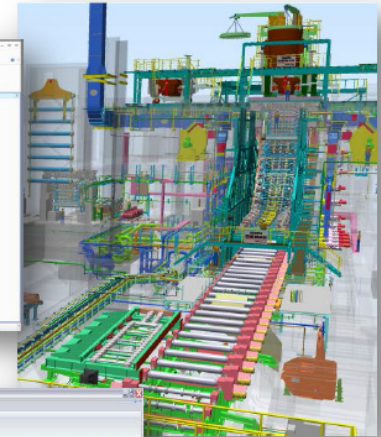
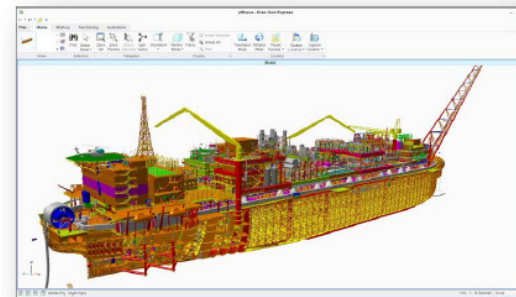
# Stereo Projection i Creo View 3 M010



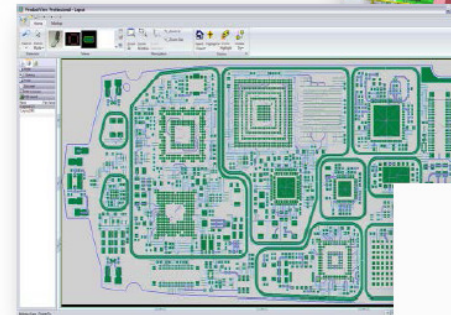
# Massive Assembly Option

A license for the **Massive Assembly option** is required for models that require more than 8 GB of memory. Previously the limit was 3.5 GB of memory. This is only applicable on 64-bit platforms when working in PTC Creo View MCAD.

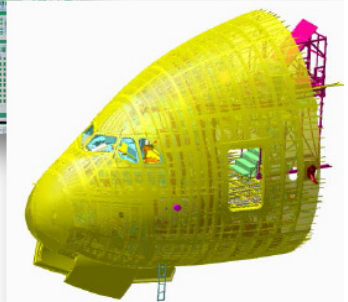
The 3.5GB limit remains for PTC Creo View Lite and PTC Creo View Express.



ance



are you have today.





Thank you for listening